

**SHADING IS OUR
HERITAGE, QUALITY IS
OUR TRADITION**




Established since 1974

月光(私人)有限公司

Moonlight Pte Ltd ~ Manufacturer of Roller Blinds and Awnings

T: 6545 3363 • F: 6545 6606

 <https://www.facebook.com/moonlightawning>

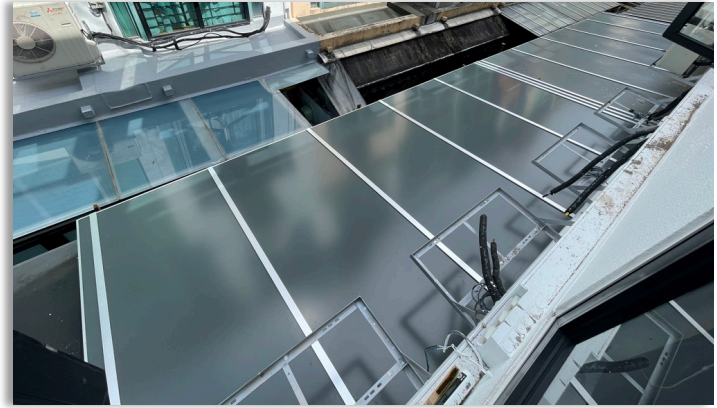
 <https://www.moonlightsingapore.com>

COMPOSITE AWNING



About Alum Composite Panel

Aluminum Composite Panel has become the most preferred and widely use by the interiors and exteriors of houses and business buildings over the last years.



Aluminum Composite Panel is also easy to maintain, non-toxic and fully recyclable to be easily shaped to blend with the design of your building.

Aluminum Composite Panel is also attractive due to its good insulation properties as well as their versatility, quality and appealing visual appearance.

Different array of colours and for you to choose from to fit the theme of your house.

*Most popular choices among home owner



Some of our work



Some of our work



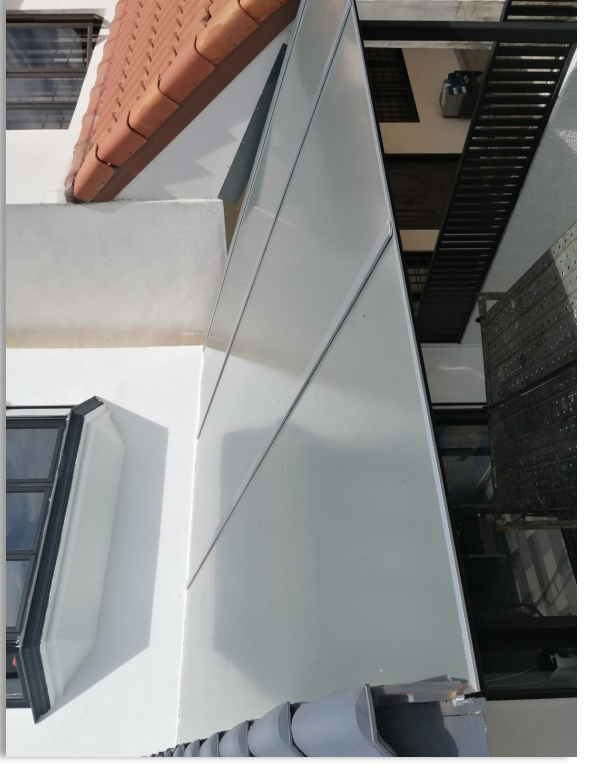
Some of our work



Some of our work



Some of our work



Some of our Work



Advantages

- Low Noise
- Light Weight
- Tough
- Modern Looking
- High Thermal Insulation
- Rain & UV Protection



Specification

Material: Alum Composite Max Projection w/o support: 8'0"
 Thickness: 4.0 mm
 Colours: 8 +
 Frame Type: Metal/Wood

Facts

Price	★ ★ ★ ★ ☆
Durability	★ ★ ★ ★ ★
Variety	★ ★ ★ ★ ☆
Attractiveness	★ ★ ★ ★ ★